

WATCHDOG 550 GUIDE: *Replacing the Display Board*



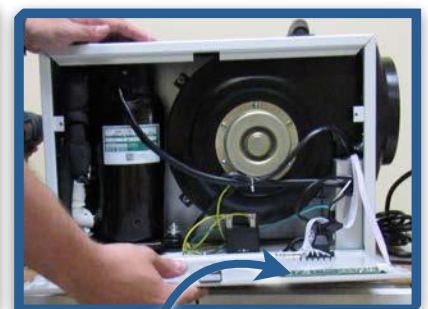
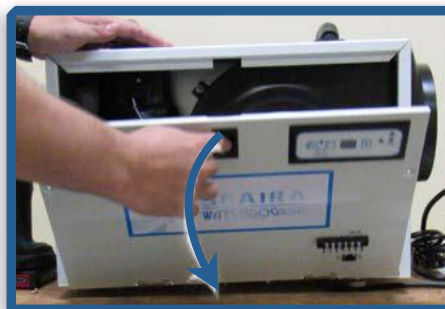
Tools:

- Phillips Head Screwdriver **-OR-** #2 Phillips Drill
- Replacement Display Board

1. First, you will need to open the access door on the side of the dehumidifier. To do this, use the screwdriver or drill, to remove the two screws holding the cabinet door in place (one screw on each side of the door).

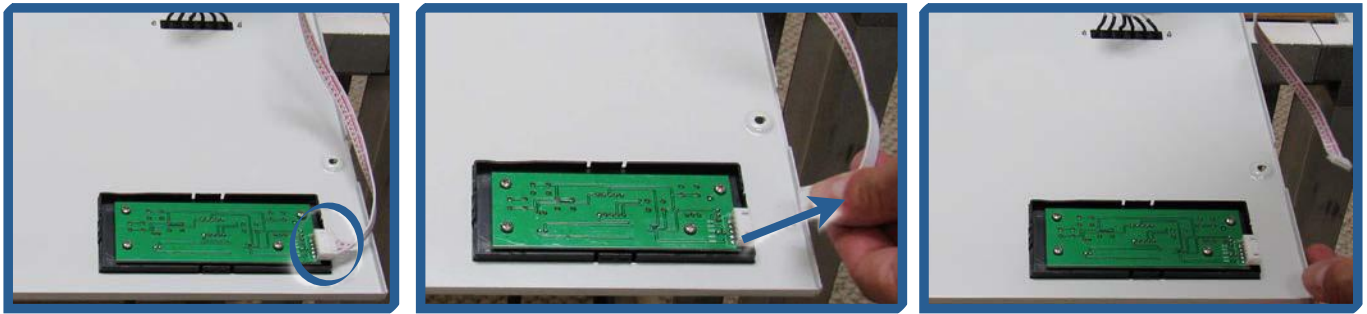


2. Next, use your hand to open the safety latch in the center of the door, and lower the cabinet door.

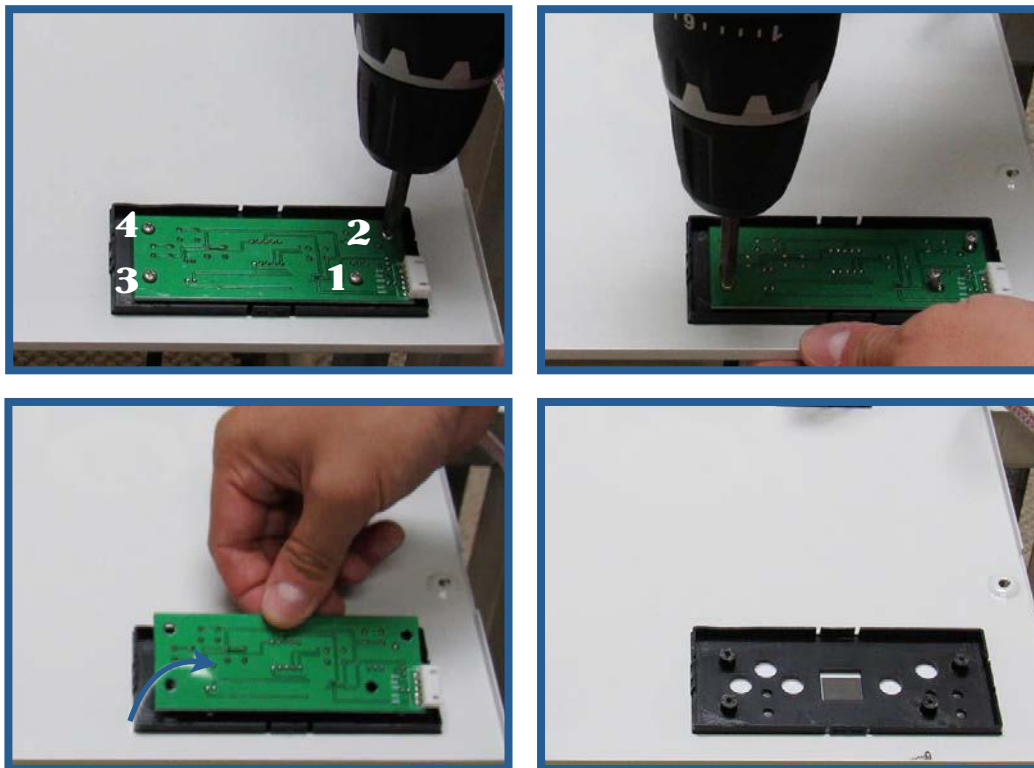


Display Board

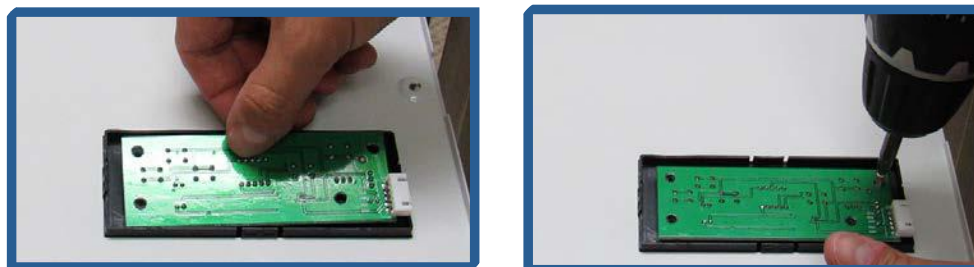
3. At this point you can unplug the display board from the display cable.



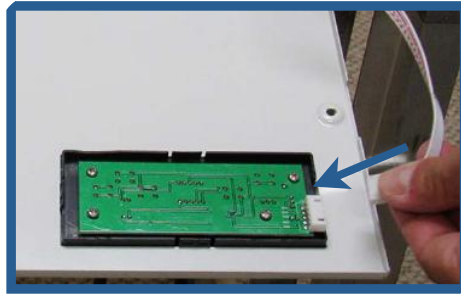
4. Now you can finish removing the display board by unscrewing the 4 screws, then lifting off of the cabinet.



5. Set the old control board aside and grab the replacement control board. Position the control board on the cabinet, then screw into place (remember there are 4 screws, one in each corner).



6. Plug the display cable into the new display board. Prior to closing up the cabinet, plug the dehumidifier into a wall outlet, and power it on, to ensure the new display board is running properly.



7. Finally, close the cabinet door and screw into place.

