

WATCHDOG^{NXT}85c Advanced Pump Cleaning



**Complete basic pump cleaning first. If that isn't sufficient, complete the advanced cleaning.*

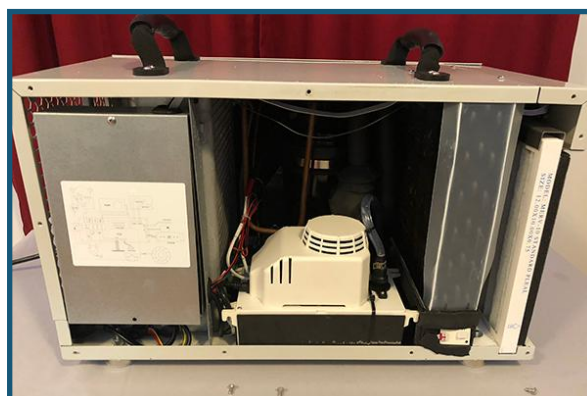
Tools:

- Phillips Head Screwdriver **OR** #2 Phillips Drill
- Flathead Screwdriver
- Cleaning Solution (choose one of the following):
 - Option #1**
 - 4 ounces white vinegar
 - 12 ounces water
 - Option #2**
 - 1 ounce bleach
 - 15 ounces water
- Approx. 32 ounces clean water
- Paper Towels

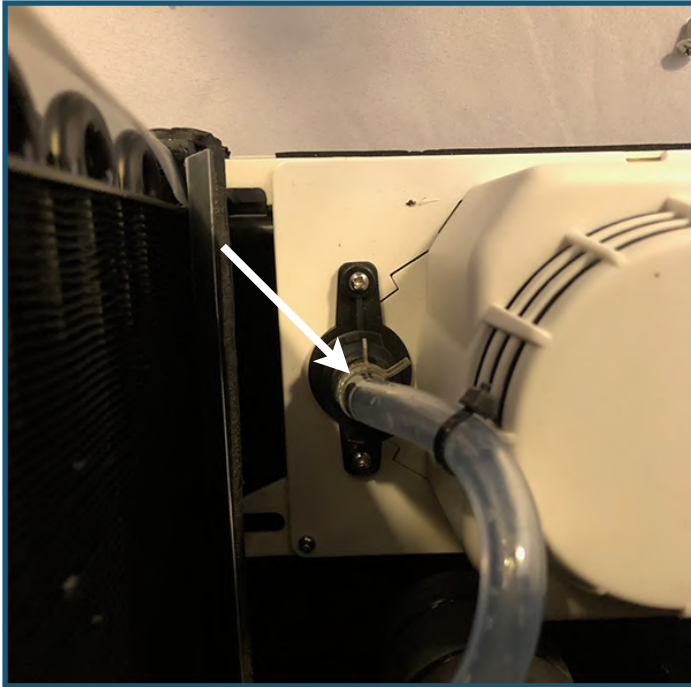
1. First, mix your cleaning solution using one of the options listed above.
2. Press the drain button to drain any water from the reservoir.



2. Next, remove the side panel so you have access to the pump (the side with the sensor vents). For more details on removing the side panel, check out the "How to Remove the Side Panels" Guide.



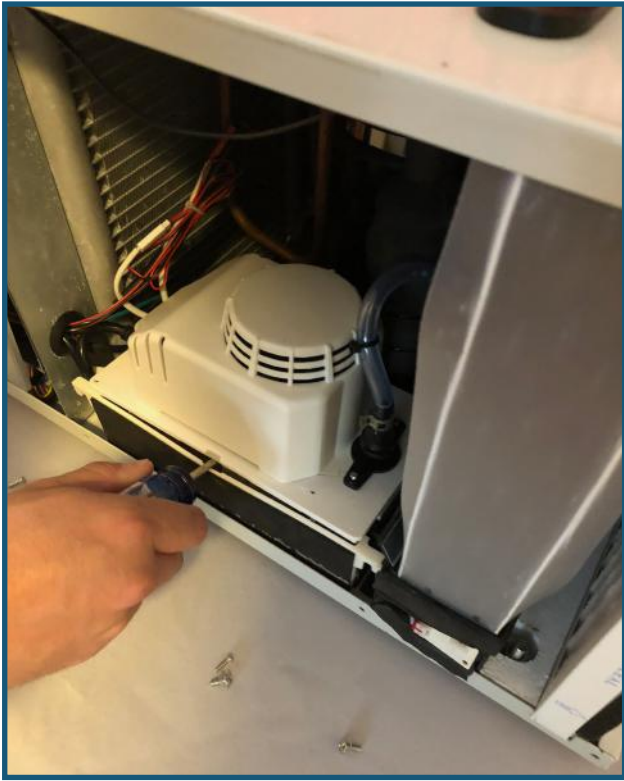
3. Use the quick connect to remove the drain tube from the pump.



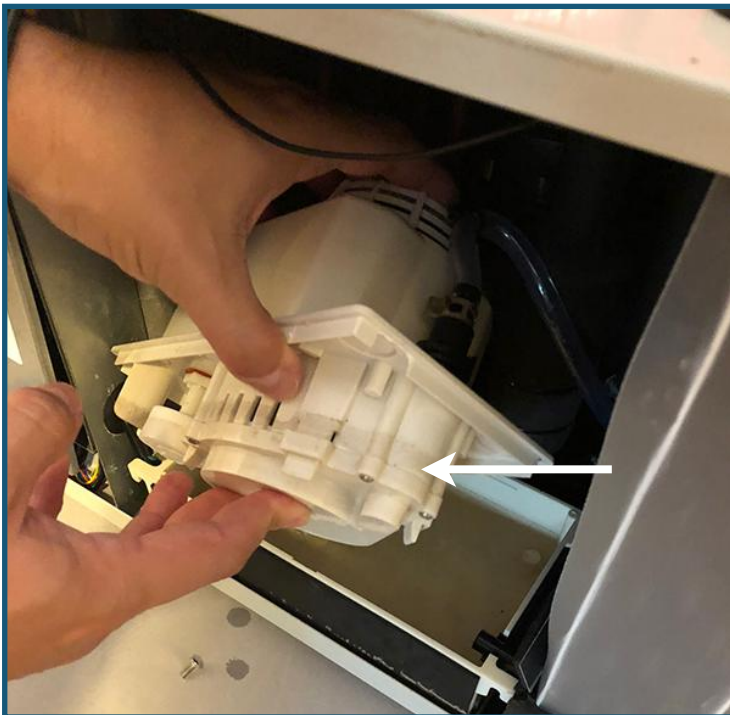
4. Next, remove the two screws holding the pump head in place, using a Philips head screwdriver.



5. Use a flathead screwdriver to lift the pump head off the reservoir.



6. Wipe the base of the pump clean using paper towels.



7. Wipe the reservoir clean using paper towels.



8. Fill the pump reservoir with the prepared cleaning solution.



9. Reassemble the pump, then use the manual drain button to flush mixture through the tubing.



10. Pour clean water into the drain tray until you hear the pump energize twice (typically 16-32 ounces).



11. Reassemble the unit.